

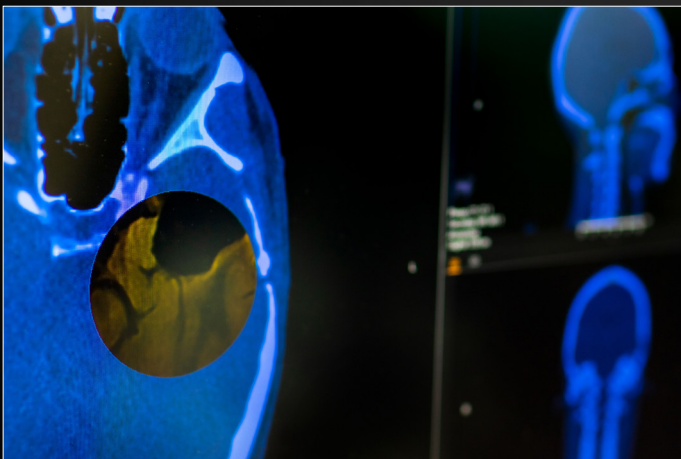
RAYSTATION 9B IS HERE! INTRODUCING CHEMO PLANNING

RayStation® is evolving. The latest version* of the innovative and flexible treatment planning system from RaySearch introduces support for medical oncology with a new module for management and prescription of chemotherapy treatments. Enhancements for particle therapy include support for Siemens Dual Energy CT in dose calculation and seated treatments. There's real-time tracking and motion management support for TomoHelical plans (Synchrony®), as well as VSim plan approval and the ROI protect option for VMAT.



CHEMO PLANNING

- Prescription of medical oncology treatments
 - Tracking of changes made to patient's regimen
 - Alerts for exceeding single and cumulative dose limits
- Management of medical oncology regimen templates
- Tools for registering, activating, and inactivating active substances to be used
- Printing of standardized reports and administration overviews



RAYSTATION 9B HIGHLIGHTS

- Chemo planning
- Deep Learning segmentation with multi-modality images
- Machine Learning planning for multi-beam set plans
- Synchrony® for TomoHelical plans
- ROI protect option for VMAT
- Siemens Dual Energy CT in dose calculation
- Seated treatments
- Further integration with RayCare®

* Subject to regulatory clearance in some markets.

MACHINE LEARNING NEWS

- Deep Learning segmentation using multi-modality images (CT and MR)
- Machine Learning planning for multi-beam set plans

PHOTON PLANNING NEWS

- ROI protect option for VMAT
- Real-time tracking and motion management support for TomoHelical plans (Synchrony®)
- Support for approval and import of VSim plans

PARTICLE THERAPY NEWS

- Dose calculation based on Dual-energy CT/SPR image data
- Support for chair and seated treatments
- MCO: Pareto plan generation time dramatically reduced
- MCO: Support for Mevion Hyperscan multi-layer aperture
- Spot dose cache to speed up the optimization, now also for the analytical proton PBS dose engine
- Generation of repainting delivery sequence for step-and-shoot PBS
- Full support for Toshiba carbon ion systems

GENERAL PLANNING NEWS

- Spy glass tool for evaluation of image registration
- Localize ROI/POI now available throughout RayStation
- Support for large image datasets (>2GB)
- Default optimization and segmentation settings in Clinic Settings
- Export anonymization options (machine names, dates, UIDs)

