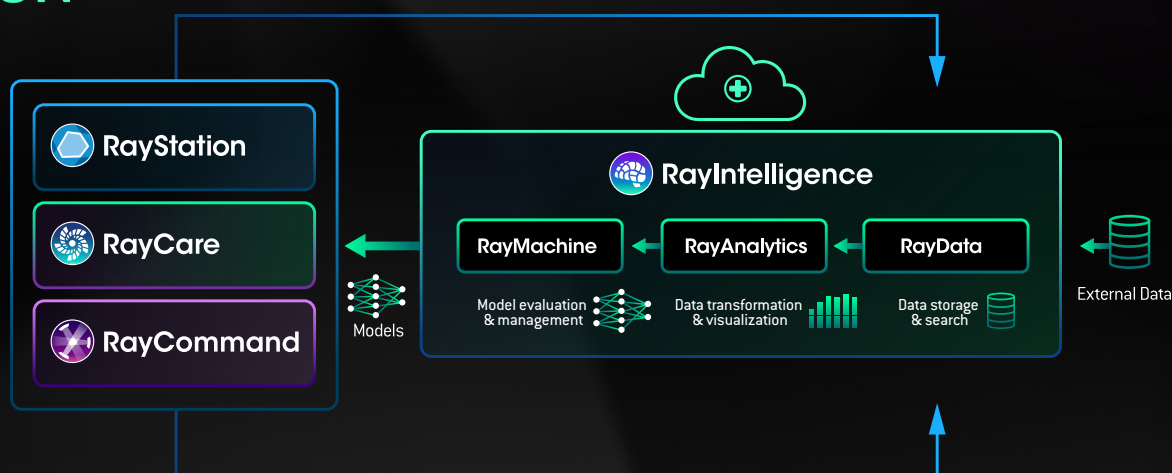


Data collected during the patient journey possesses a wealth of information that can help you improve and streamline your workflows. There is seldom a lack of patient data in today's clinics, but often a lack of time to merge and analyze. This is why we have created RayIntelligence®. This cloud-based oncology analytics system is designed to help turn your data into insights.



VISION



WHAT IS AN ONCOLOGY ANALYTICS SYSTEM?

Our oncology analytics system uses open APIs to facilitate the seamless integration of your patient data. Pre-generated dashboards for visualization and drill-down will enable you to define data sets for trials, monitoring, research and to enable clinics to faster evaluate changes in their plans for a group of patients.

RayIntelligence simplifies data integration with the treatment planning system RayStation and supports patient and treatment population analysis, research activities and workflow improvements. It can be used to display patient data in all areas of cancer care including radiation therapy, medical and surgical oncology. Future versions of RayIntelligence will be integrated with other systems at the clinic such as PACS, OIS, and HIS.*

WHAT IS RAYINTELLIGENCE?

A cloud-based oncology analytics system

RayData Simplifies and automates data integrations

RayAnalytics Enables insights from real-world data

RayMachine* Simplifies the deployment process

WHY RAYINTELLIGENCE?

- Enable data insights
 - Integrate different data sources
 - Automatic data upload pipeline
 - Perform population analytics
 - Make decisions based on real-world data
- Simplify machine learning process
 - Data set analysis and creation
 - Batch runs for model validation
 - Monitoring of model performance

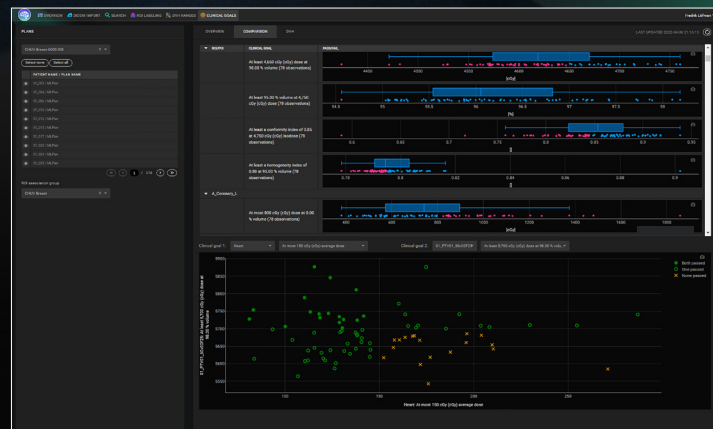
* Subject to regulatory clearance in some markets.

PRODUCT NEWS

RAYINTELLIGENCE 2A IS HERE!

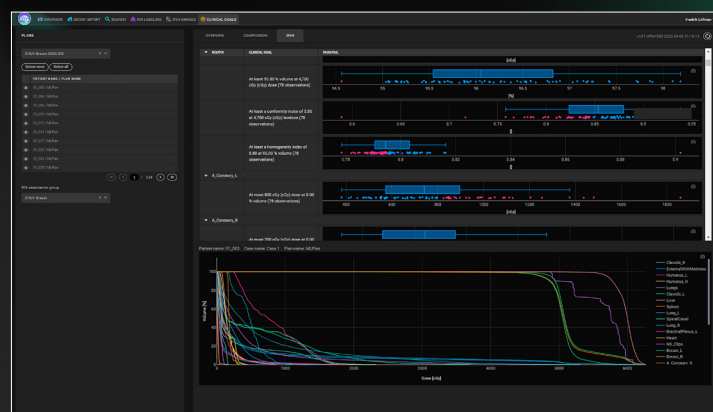
RAYDATA

- On-premises integration with RayStation database systems
- Automatic export of RayStation data from the Patient DB
- Possibility to anonymize RayStation data before upload
- Encryption of data in transit and at rest
- Automatic upload of exported RayStation data to cloud storage
- Robust dedicated storage in the cloud with full data integrity
- Dashboard for transferred data and integrations
- Interface for connecting third-party BI tools such as Tableau
- DICOM integration with support for DICOM file import



RAYANALYTICS

- Computation of metrics based on data ingested via RayData such as dose statistics and clinical goals
- Dashboard to search data and define data sets
- Dashboard for data cleaning and ROI names
- Dashboard for DVH ranges with statistics
- Dashboard for clinical goals
- Dashboard for DICOM import including import history

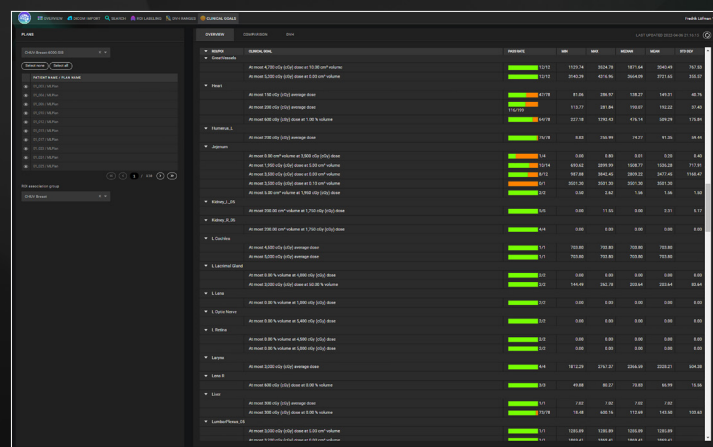


IS IT IN THE CLOUD?

Yes, it is in the cloud, and there are several benefits to that. You can scale your usage of the service up or down depending on the current need. Your data is backed up and protected in a secure and safe location operated by Amazon Web Services (AWS) – one of the world's leading providers of cloud computing. Upgrades come on a regular basis, and last but not least, it saves your IT department from having to manage and maintain expensive equipment.

ABOUT SECURITY

Data security is a top priority in RayIntelligence, and all data is encrypted both in transit and at rest. User authentication is based on SAML with continuous security monitoring.



** Subject to regulatory clearance in some markets.*